

通信继电器

HJR4102E

- Small size and low cost
- DIP standard terminals
- Surge Strength 1500V FCC68
- Sealed type available
- Conform to RoHS,ELV directive



10002048745

US E173485

R50056406

ORDERING CODE 订购代码

| | | | | | |
|--|--------------------------------|----------------|----------------------|------------|------------|
| <u>HJR4102E</u> | <u>D</u> | <u>— 12VDC</u> | <u>— S</u> | <u>— Z</u> | <u>***</u> |
| 1 | 2 | 3 | 4 | 5 | 6 |
| 1. Relay Model 继电器型号 | 3. Coil Nominal Voltage 线圈额定电压 | | 5. 触点转换形式 | | |
| 2. Coil Power 线圈功率 D=0.36W, L=0.2W, N=0.45W | 3,5,6,9,12,24,48VDC | | Z: Form C; H: Form A | | |
| | 4. Sealed 密封 | | 6. 识别代码 | | |

COIL DATA 线圈参数 (at 20°C)

| | | | | | | | | |
|---|-------------------------------|------|------|------|------|------|------|-------|
| Nominal Voltage 额定电压(VDC) | 3 | 5 | 6 | 9 | 12 | 24 | 48 | 0.36W |
| Coil Resistance 线圈阻值($\Omega \pm 10\%$) | 25 | 69 | 100 | 225 | 400 | 1600 | 6400 | |
| Rated Current 额定电流(mA) | 120 | 71.4 | 60 | 40 | 30 | 15 | 7.5 | |
| Max Operate Voltage 最大吸合电压(VDC) | 2.25 | 3.75 | 4.5 | 6.75 | 9 | 18 | 36 | |
| Min Release Voltage 最小释放电压(VDC) | 0.3 | 0.5 | 0.6 | 0.9 | 1.2 | 2.4 | 4.8 | |
| Coil Resistance 线圈阻值($\Omega \pm 10\%$) | 20 | 56 | 80 | 180 | 320 | 1280 | 5120 | 0.45W |
| Rated Current 额定电流(mA) | 150 | 90 | 75 | 50 | 37.5 | 18.7 | 9 | |
| Max Operate Voltage 最大吸合电压(VDC) | 2.25 | 3.75 | 4.5 | 6.75 | 9 | 18 | 36 | |
| Min Release Voltage 最小释放电压(VDC) | 0.3 | 0.5 | 0.6 | 0.9 | 1.2 | 2.4 | 4.8 | |
| Coil Resistance 线圈阻值($\Omega \pm 10\%$) | 45 | 125 | 180 | 105 | 720 | 2880 | | 0.2W |
| Rated Current 额定电流(mA) | 66.7 | 40 | 33.3 | 22.2 | 16.7 | 8.3 | | |
| Max Operate Voltage 最大吸合电压(VDC) | 2.25 | 3.75 | 4.5 | 6.75 | 9 | 18 | | |
| Min Release Voltage 最小释放电压(VDC) | 0.3 | 0.5 | 0.6 | 0.9 | 1.2 | 2.4 | | |
| Max Applicable Voltage 最大过载电压 | 70°C时额定电压的130%，23°C时额定电压的170% | | | | | | | |

CONTACT DATA 触点参数

| | |
|------------------------------|---|
| Contact Form 触点形式 | 1H/1Z |
| Contact Material 触点材料 | Silver Alloy |
| Load 负载 | Resistive load(COS Φ =1) |
| Contact Ratings 触点负载 | 3A 120VAC/24VDC 1A250VAC(TUV) |
| Minimum load 最小负载 | 1mA 5VDC |
| Max Switching Voltage 最大转换电压 | 240VAC/60VDC |
| Max Switching Current 最大转换电流 | 5A |
| Max Switching Power 最大转换功率 | 360VA/90W |
| Contact Resistance 接触电阻 | 100m Ω Max at 6VDC 1A |
| Life Expectancy 寿命 | Electrical 电气寿命: 100,000 Operations(at30Operations/minute) |
| | Mechanical 机械寿命: 10,000,000 Operations(at3000Operations/minute) |

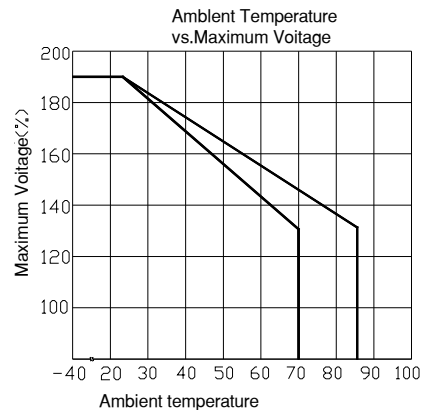
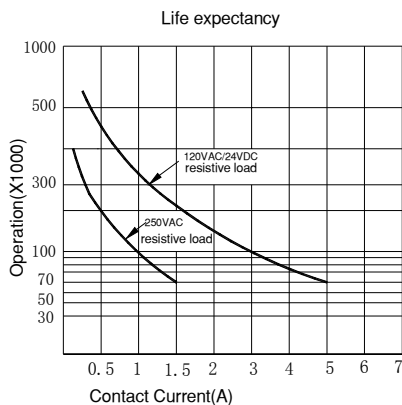
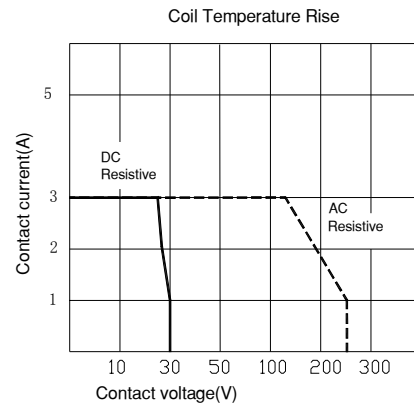
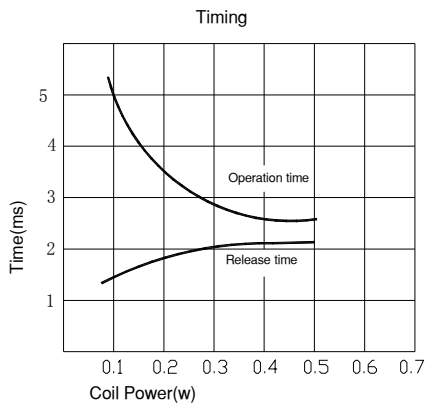
■ CHARACTERISTICS DATA 性能参数

| | |
|--|--|
| Insulation Resistance绝缘阻值 | 100MΩ Min at 500VDC |
| Dielectric Strength Between Open Contacts触点间耐压 | 500VAC(for one minute) |
| Between Contacts and coil触点与线圈间耐压 | 1000VAC(for one minute) or 1500VAC(for one minute) |
| Operate Time吸合时间 | 5ms |
| Release Time释放时间 | 5ms |
| Temperature Range环境温度 | -30°C to +85°C |
| Shock Resistance冲击 | Operating Extremes动作极限: 10G |
| | Damage Limits破坏极限: 50G |
| Vibration Resistance振动 | 10-55Hz, 1.5mm |
| Max. switching frequency最大转换频率 | Mechanical: 18,000operations/hr |
| | Electrical: 1,800operations/hr |
| Humidity湿度 | 40-85% |
| Weight重量 | Approx 3.5g |
| Safety Standard安全标准 | UL cUL TÜV CQC |

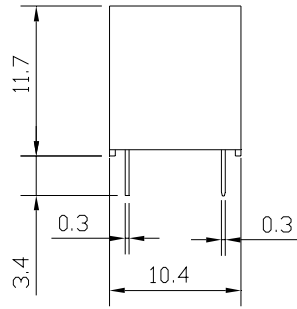
■ APPROVED STANDARDS 安全标准

| Model(型号) | Coiling rating (线圈电压) | Safety Standard (安全标准) | Contact rating (触点负载) |
|-----------|-----------------------|------------------------|------------------------------------|
| HJR4102E | 3 to 48VDC | TÜV | 3A 120VAC 3A 24VDC 1A 250VAC |
| | | UL/cUL | 3A 120VAC 3A 24VDC |
| | | CQC | 3A 120VAC 1A 250VAC |

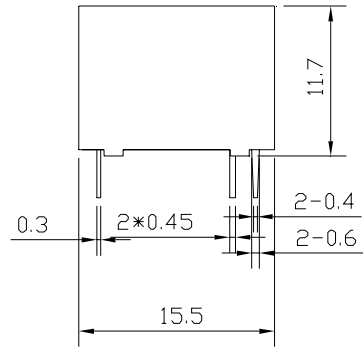
■ ENGINEERING DATA 设计参数



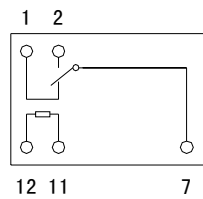
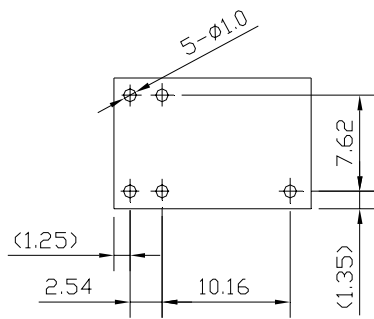
■ OVERALL AND MOUNTING DIMENSIONS 安装图



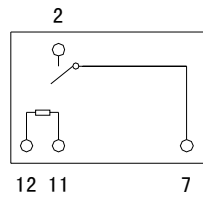
安装图



接线图



FormC



FormA

- 备注：1) 产品部分外形尺寸中未注尺寸公差：当外形尺寸 $\leq 1\text{mm}$ 时，公差为 $\pm 0.2\text{mm}$ ；当外形尺寸在 $1\sim 5\text{mm}$ 时，公差为 $\pm 0.3\text{mm}$ ；
当外形尺寸 $> 5\text{mm}$ 时，公差为 $\pm 0.4\text{mm}$ 。
2) 安装孔尺寸中未注尺寸公差均为 $\pm 0.1\text{mm}$ 。

声明：

本产品规格书仅供客户使用时参考，如有更改，恕不另行通知。