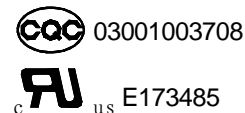


# 通用继电器

# TRAF

- Ideal for motor switching in appliances and HVAC
- 20A switching capability
- Designed for high inrush compressor loads
- Semi-sealed construction
- Sealed version available
- Conform to RoHS,ELV directive



30.5×16.0×23.5

## ■ ORDERING CODE 订购代码

<u>TRAF</u> — <u>12VDC</u> — <u>S</u> — <u>H</u>			
1	2	3	4
1. Relay Model 继电器型号			4. 触点转换形式
2. Coil Nominal Voltage 线圈额定电压 5,6,12,24,48VDC			H: Form A
3. S: Sealed 密封			

## ■ COIL DATA 线圈参数 (at 20°C)

Nominal Voltage 额定电压(VDC)	5	6	12	24	48	0.9W
Coil Resistance 线圈阻值( $\Omega \pm 10\%$ )	28	40	160	640	2560	
Rated Current 额定电流(mA)	180	150	75	37.5	18.75	
Max Operate Voltage 最大吸合电压(VDC)	3.75	4.5	9	18	36	
Min Release Voltage 最小释放电压(VDC)	0.5	0.6	1.2	2.4	4.8	
Max Applicable Voltage 最大过载电压	70°C时额定电压的130%，23°C时额定电压的170%					

## ■ CONTACT DATA 触点参数

Contact Form 触点形式	1H
Contact Material 触点材料	Silver Alloy
Load 负载	Resistive load(COS $\Phi$ =1)
Contact Ratings 触点负载	20A 250VAC
Minimum load 最小负载	100mA 5VDC
Max Switching Voltage 最大转换电压	250VAC
Max Switching Current 最大转换电流	20A
Max Switching Power 最大转换功率	5000VA
Contact Resistance 接触电阻	100m $\Omega$ Max at 6VDC 1A
Life Expectancy 寿命	Electrical 电气寿命: 100,000 Operations(at30Operations/minute)
	Mechanical 机械寿命: 10,000,000 Operations(at300Operations/minute)

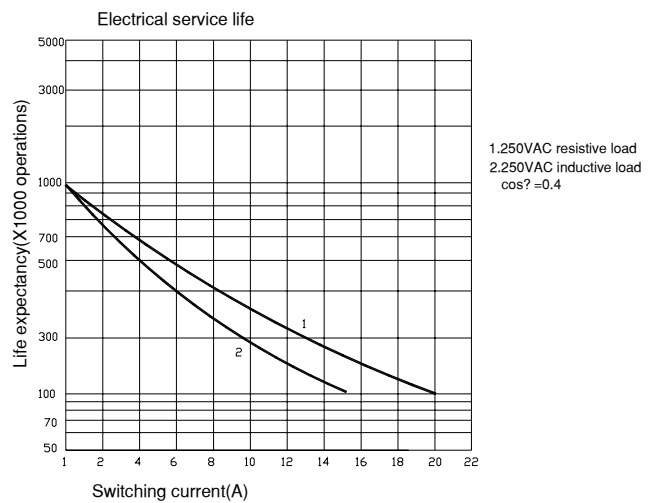
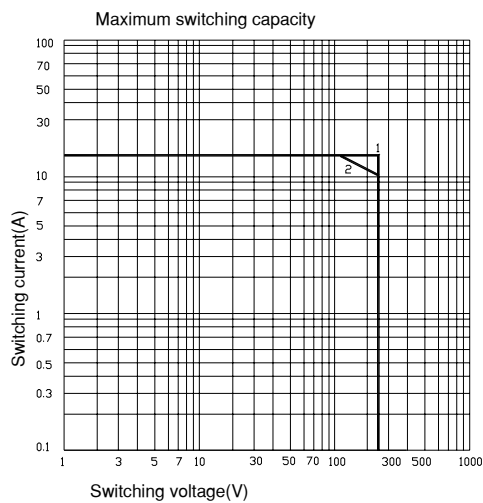
### ■ CHARACTERISTICS DATA 性能参数

Insulation Resistance绝缘阻值	100MΩ Min at 500VDC
Dielectric Strength Between Open Contacts触点间耐压	1500VAC(for one minute)
Between Contacts and coil触点与线圈间耐压	4500VAC(for one minute)
Operate Time吸合时间	20ms
Release Time释放时间	10ms
Temperature Range环境温度	-25°C to +55°C
Shock Resistance冲击	Operating Extremes动作极限: 20G
	Damage Limits破坏极限: 100G
Vibration Resistance振动	10-55Hz, 1.5mm
Max. switching frequency最大转换频率	Mechanical: 18,000operations/hr
	Electrical: 1,800operations/hr
Humidity湿度	40-85%
Weight重量	Approx 23g
Safety Standard安全标准	UL cUL CQC

### ■ APPROVED STANDARDS 安全标准

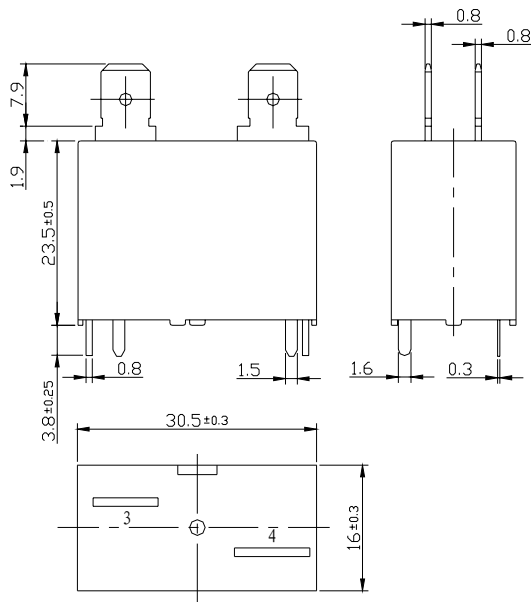
Model(型号)	Coiling rating (线圈电压)	Safety Standard (安全标准)	Contact rating (触点负载)
TRAF	5 to 48VDC	UL/cUL	20A 250VAC
		CQC	20A 250VAC

### ■ ENGINEERING DATA 设计参数

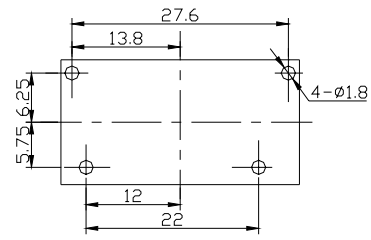


■ OVERALL AND MOUNTING DIMENSIONS 安装图

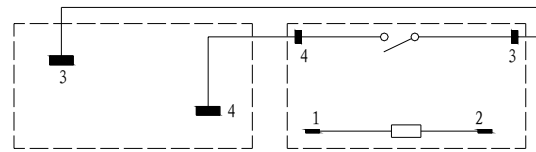
TRAF-H



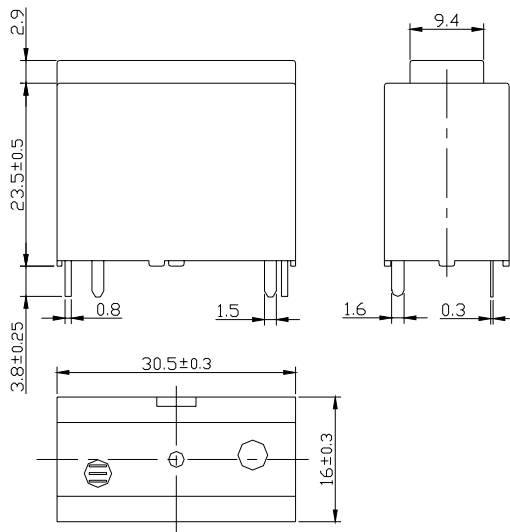
底视图 (Bottom terminals)



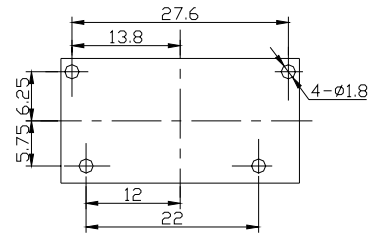
接线图 (Terminal arrangement)



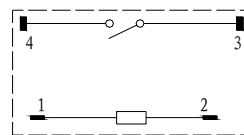
TRAF-H-P



底视图 (Bottom terminals)



接线图 (Terminal arrangement)



声明:

本产品规格书仅供客户使用时参考, 如有更改, 恕不另行通知。