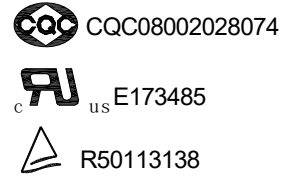


<b>PCB 继电器</b>	<b>TRA2F</b>
----------------	--------------

- 16A switching capabilities  
16A 转换能力
- 5KV dielectric strength between coil to contacts  
5KV 线圈和触点间耐压
- 10KV surge voltage between coil to contacts  
10KV 线圈和触点间冲击电压
- Meet requirements of 8mm creepage distance  
8mm 爬电距离
- Conform to RoHS,ELV directive  
符合 RoHS,ELV 指令



**CONTACT DATA 触点参数**

Contact Arrangement 触点形式	1H
Contact Material 触点材料	Silver Alloy
The thickness of Silver Alloy Contact 触点银合金层厚度	≥0.3mm
Load 负载	Resistive load(COS Φ=1)
Contact Ratings 触点负载	16A 250VAC      20A 125VAC 16A 30VDC
Min. Contact Load 最小负载	-----
Max. Switching Voltage 最大切换电压	277VAC/30VDC
Max. Switching Current 最大切换电流	20A
Max. Switching Power 最大切换功率	-----
Contact Resistance 接触电阻	50mΩ Max. at 6VDC 1A
Electrical Endurance 电耐久性	1×10 <sup>5</sup> OPS(at 30 OPS/min)
Mechanical Endurance 机械耐久性	1×10 <sup>7</sup> OPS(at 300 OPS/min)

**CHARACTERISTICS 性能参数**

Insulation Resistance 绝缘电阻	1000MΩ Min. at 500VDC	
Dielectric Strength 介质耐压	Between Open Contacts 触点间	1000VAC(50/60Hz for 1 min)
	Between Contacts and Coil 触点与线圈间	5000VAC(50/60Hz for 1 min)
Operate Time 动作时间	7.2ms±1.5ms	
Release Time 释放时间	5ms Max	
Ambient Temperature 环境温度	-40℃to+105℃ (no freezing)	
Shock Resistance 冲击	Functional 稳定性:	10G
	Destructive 强度:	100G
Vibration Resistance 振动	10-55Hz, 1.5mm DA 双振幅	
Max. Switching Frequency 最大切换频率	Mechanical:	18,000 OPS/h
	Electrical:	1,800 OPS/h
Humidity 湿度	20-85%	
Unit Weight 重量	Approx 15g 约15克	

Safety Approval 安全认证	UL cUL TÜV CQC
----------------------	----------------

### ■ COIL DATA 线圈参数 (at 20°C)

Rated Voltage 额定电压 (VDC)	5	6	9	12	18	24	48	0.54W
Coil Resistance 线圈电阻 ( $\Omega \pm 10\%$ )	46	67	150	270	620	1050	4250	
Rated Current 额定电流 (mA)	108	90	60	45	29	22.5	11.3	
Max. Operate Voltage 最大动作电压 (VDC)	4	4.8	7.2	9.6	14.4	19.2	38.4	
Min. Release Voltage 最小释放电压 (VDC)	0.5	0.6	0.9	1.2	1.8	2.4	4.8	
Max. Voltage 最大电压	6.5	7.8	11.7	15.6	23.4	31.2	62.4	

Remark: Max. Voltage refers to the maximum voltage which relay coil could endure in a period of time.

备注：最大电压是指继电器线圈在短时间内能够承受的最大电压值。

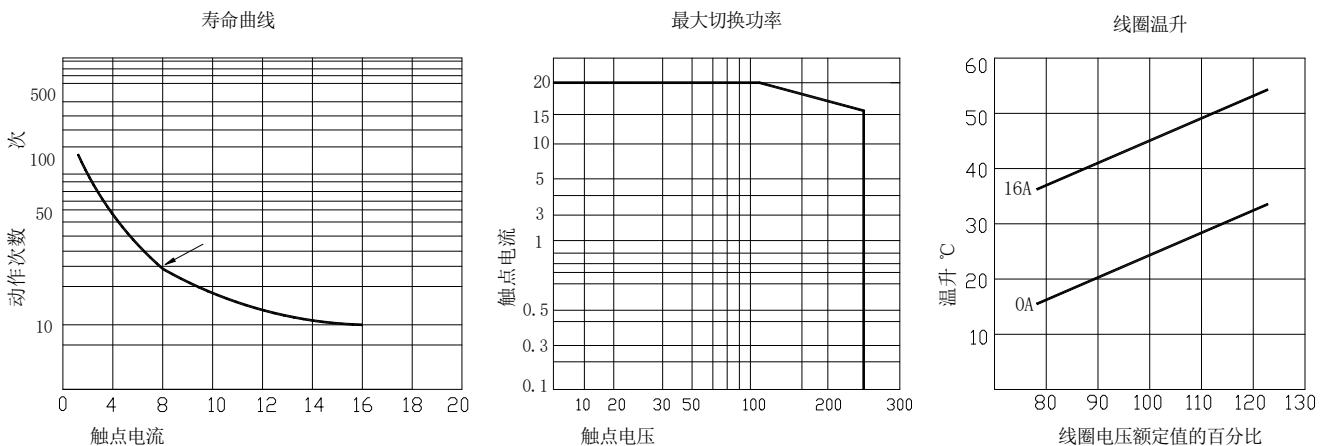
### ■ SAFETY APPROVED RATINGS 安全认证

Type(型号)	Coil Voltage (线圈电压)	Safety Approval (安全认证)	Contact Ratings (触点负载)
TRA2F	5 to 48VDC	TUV	16A 250VAC 16A 30VDC
		UL&CUL	20A 125VAC 16A 250VAC 1/3 HP 120/250/277VAC
		CQC	16A 125/250VAC

### ■ ORDERING INFORMATION 订货标记示例

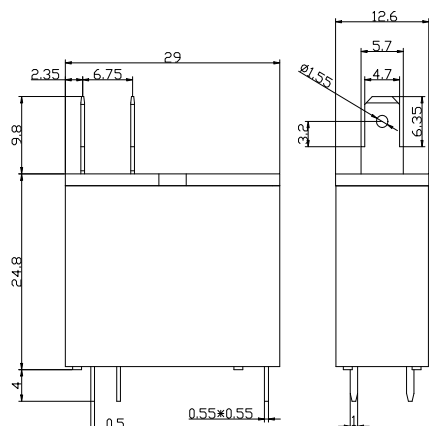
		<b>TRA2F</b>	<b>-12VDC</b>	<b>-H</b>	<b>P</b>	<b>XX</b>
<b>Type</b>	<b>型号</b>	<b>TRA2F: 继电器型号</b>				
<b>Coil Rated Voltage</b>	<b>线圈额定电压</b>	<b>06,12,24VDC</b>				
<b>Contact Arrangement</b>	<b>触点形式</b>	<b>H: 1 Form A H: 一组常开</b>				
<b>Installation method</b>	<b>安装形式</b>	<b>Nil: 标准 P: PCB 脚位</b>				
<b>Special Code</b>	<b>特性号</b>	<b>XX: Customer Special Requirement</b>	<b>IT: Compliant with IEC 60335-1 (GWT)</b>	<b>Nil: Standard Type</b>		
		<b>XX: 客户特殊要求</b>	<b>IT: 满足 IEC 60335-1 (GWT)</b>	<b>无: 标准型</b>		

### CHARACTERISTIC CURVES 性能曲线图



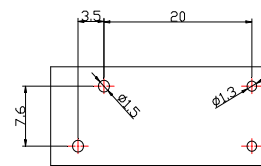
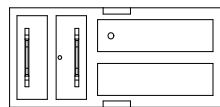
■ OUTLINE DIMENSIONS, WIRING DIAGRAM AND PC BOARD LAYOUT 外形图、接线图、安装孔尺寸  
TRA2F 标准型

外形图

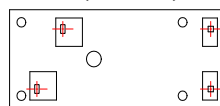


安装孔尺寸  
(底视图)

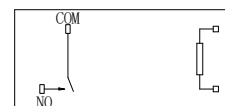
(顶视图)



(底视图)

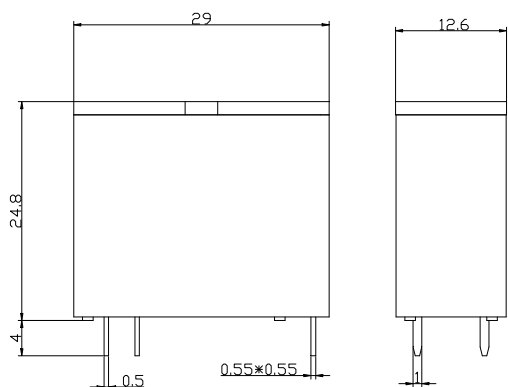


接线图



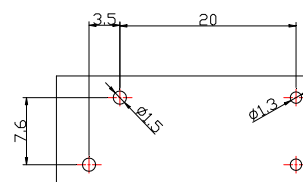
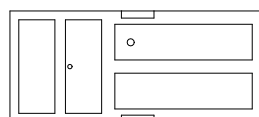
TRA2F PCB 型

外形图

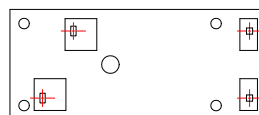


安装孔尺寸  
(底视图)

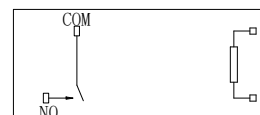
(顶视图)



(底视图)



(接线图)



备注:

- 1) 产品外形图的标注尺寸为沾锡前尺寸(沾锡后会变大), 安装孔尺寸为推荐的 PCB 板孔的设计尺寸, 具体 PCB 板孔设计尺寸可根据产品实物进行测绘、调整;
- 2) 产品部分外形尺寸中未注尺寸公差: 当外形尺寸  $\leq 1\text{mm}$  时, 公差为  $\pm 0.2\text{mm}$ ; 当外形尺寸在  $1\sim 5\text{mm}$  时, 公差为  $\pm 0.3\text{mm}$ ; 当外形尺寸  $> 5\text{mm}$  时, 公差为  $\pm 0.4\text{mm}$ 。
- 3) 安装孔尺寸中未注尺寸公差均为  $\pm 0.1\text{mm}$ 。

Remark:

- 1) In case of no tolerance shown in outline dimension: outline dimension  $\leq 1\text{mm}$ , tolerance should be  $\pm 0.2\text{mm}$ ; outline dimension  $> 1\text{mm}$  and  $\leq 5\text{mm}$ , tolerance should be  $\pm 0.3\text{mm}$ ; outline dimension  $> 5\text{mm}$ , tolerance should be  $\pm 0.4\text{mm}$ .
- 2) The additional tin top is max. 1mm.
- 3) The tolerance without indicating for PCB layout is always  $\pm 0.1\text{mm}$ .

声明:

本产品规格书仅供客户使用时参考, 如有更改, 恕不另行通知。

Disclaimer:

The specification is for reference only. Specification subject to change without notice.